



**SETTING STANDARDS IN HAULING™**



**SUPERIOR PERFORMANCE  
AND INCREASED PAYLOAD**

**16-Series Industrial Carrier: 16A**

[www.dancoproducts.com](http://www.dancoproducts.com)

**MADE IN THE USA**  **• GREENCASTLE, PA**

**INDUSTRIAL CARRIER • 16-SERIES • ALUMINUM**

**SPECIFICATIONS**

**DECK LENGTH**

15 ft	4.57 m
17 ft	5.18 m
18 ft	5.49 m
19 ft	5.79 m
20 ft	6.10 m
21 ft	6.40 m
22 ft	6.71 m

**CAB TO AXLE (clear)**

84 in	213.36 cm
108 in	274.32 cm
108 in	274.32 cm
114 - 120 in	289.56 - 304.80 cm
120 - 132 in	304.80 - 335.28 cm
138 - 144 in	350.52 - 365.76 cm
150 - 156 in	381.00 - 396.24 cm

Capacity (Water Level Load)	16,000 lb	7,257.48 kg
Width	96 in	243.84 cm
Diamond Plate Decking	3/16 in	0.48 cm
Winch Ramsey Worm Gear	8,000 lb	3,628.74 kg
Winch Cable	3/8 in x 50 ft	0.95 cm x 15.24 m

**CHASSIS RECOMMENDATIONS**

Minimum GVWR (Gross Vehicle Weight Rating)	19,500 lb	8,845.05 kg
• With Wheel Lift		
• Without Wheel Lift	15,000 lb	6,803.89 kg
Minimum RBM	500,000 in-lb	
Minimum Frame Height	29 in	73.66 cm
Maximum Frame Height	38 in	96.52 cm

**STANDARD FEATURES**

- Diamond Plate Decking
- Tie Downs: 4 Front · 4 Rear
- Non-Polished Deck Finish
- Heavy Duty Approach Plate
- Full Length Stake Pockets
- Right & Left Chain Trays
- Cable Tensioner
- Manual Shift Winch Free Spool Lever
- Anti-Tilt Deck Feature
- Extra Length Push-Off Cylinder
- Two Power Lift Cylinders
- Right & Left Illuminated Controls
- Counterbalance Valves
- High Performance Slide Pads
- Adjustable Deck Hold Downs
- Lubrication Fittings at Pivot Points
- Federal Standard #108 Lighting
- LED Light Package
- Weather Resistant Electrical System
- Deck & Subframe Junction Boxes
- Back-Up Lights & Alarm
- Mud Flaps

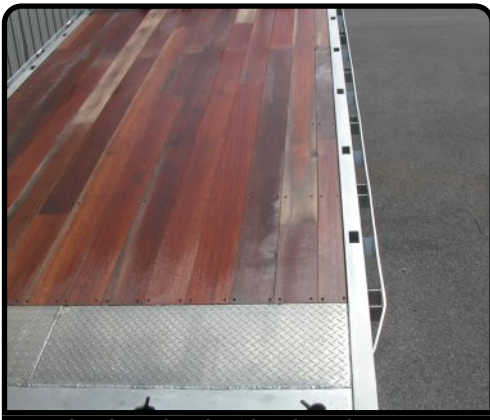
**OPTIONS\***

- Wood Deck
- Aluminum Extruded Decking
- 102" Wide Deck
- Rub Rail w/ Stake Pockets
- Removable Deck Rails
- Planetary Winch
- Rear Hydraulic Stabilizer
- Variety of Hitch Options Available
- Cab Protector Options
- Enclosed Bottom Cab Protector
- Tie-Down Key Slots & D-Rings
- Work Lights
- Tool Box Options

**IMPORTANT:** Gross vehicle rating limitation must be considered. Ratings are based on structural factors only, not chassis capacity. Danco's body ratings are based on a water level capacity. Danco specifications shown are approximations and may vary depending on chassis selected. Prices and product specifications are subject to change without notice. Consult with state and local laws for the maximum vehicle lengths allowed. Optional equipment may be shown in photographs and may not be part of the standard package. Optional upgrade prices not included in standard pricing. See [dancoproducts.com](http://dancoproducts.com) for a more complete list of specifications. \* Optional upgrade prices not included in standard pricing. All prices are installed, Freight on Board Greencastle, PA



• Hydraulic Stabilizer Bar with Pintel Hitch



• Wood Deck & Rub Rails with Stake Pockets

**DISTRIBUTED BY:**

**DANCO PRODUCTS**

411 South Cedar Lane  
Greencastle, PA 17225  
Telephone: 717-597-7185  
Toll-free in US 1-800-453-2626  
[www.dancoproducts.com](http://www.dancoproducts.com)



Industrial\_16A\_8Ton.05272020