

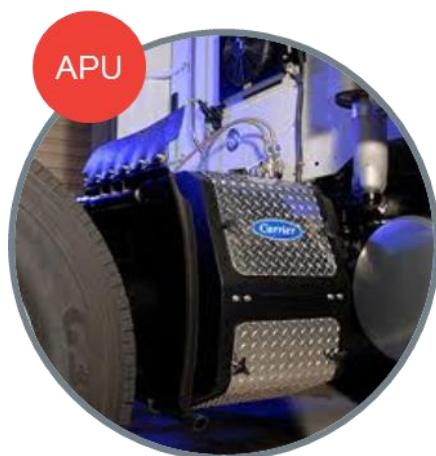
Kaiser. Performance counts.



***CV SERIES***

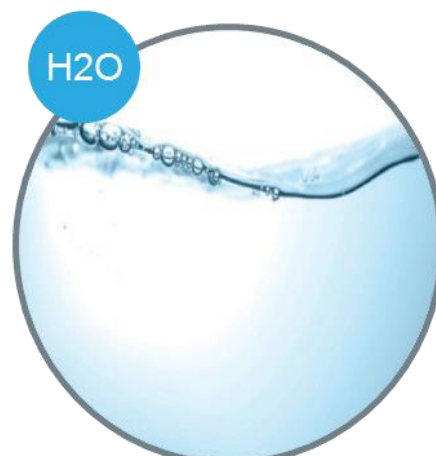
**HYDRO EXCAVATION  
EQUIPMENT**

# CV SERIES™ QUICK FACTS



## Onboard Auxiliary Power Available

110V power available without running the chassis engine. Powers the traffic control lights and prevents freezing if unmanned.



## 1,600 – 2,200 GAL WATER CAPACITY

Ample water storage paired with adjustable water pressure and dig tips to keep the crew running.



## 13.5 YARD DEBRIS CAPACITY

Large 13.5 cubic yard debris capacity to transport the spoils of any job.



## REAR DUMP

Patent protected offload system eliminates the need to raise the tank. Increasing safety and efficiency of the machine



## ALL DETAILS AT A GLANCE



### Top Gun Boom

The CV Series Hydrovac's extendable boom delivers superior reach and mobility. Our unique Head-mount design allows 342-degree rotation and a 26 ft stretch.

### Direct Driven PD Blower

Positive displacement Robuschi blowers have proven superior to other PD blowers and fan systems. A full 27 inches Hg pull, direct-driven from the transfer case.



### UL Listed Boiler

Premier's standard 700,000 BTU/120V boiler offers independent diagnostic system and thermostat control



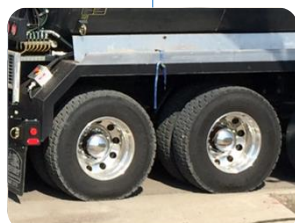
### Wireless Remote

All functions can be operated by wireless remote for one man operation, backed up with concise manual controls if needed.



### Patented Offload

The Patented design eliminates overhead conflict concerns when offloading by avoiding the need to raise the tank. Rather than using gravity alone, the CV series applies its mechanical advantage to quickly offload compacted tank debris



### Axle Configurations

Available 6 x 4 Tandems, Tridems and multiple lift axle configurations

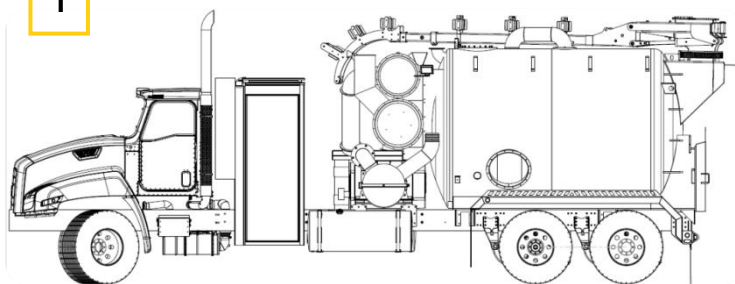


### Van Body

All critical components are centralized and housed in an insulated, heated aluminum van body. Operators will especially appreciate this functional space located on both sides of the machine.

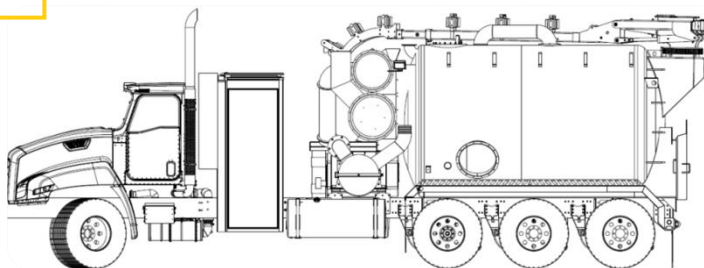
# CV CHASSIS CONFIGURATIONS

1



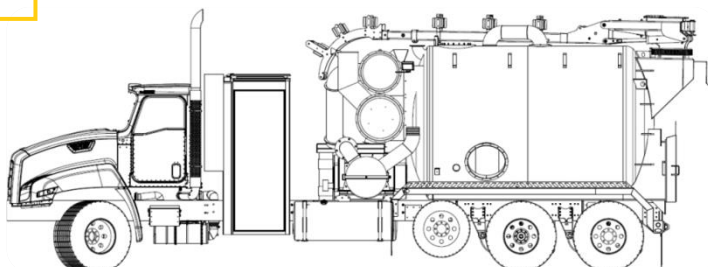
**CHASSIS:** Tandem . **BODY:** CV100  
**WATER CAPACITY:** 1600 GAL. **DEBRIS CAPACITY:** 13.5 YRD

3



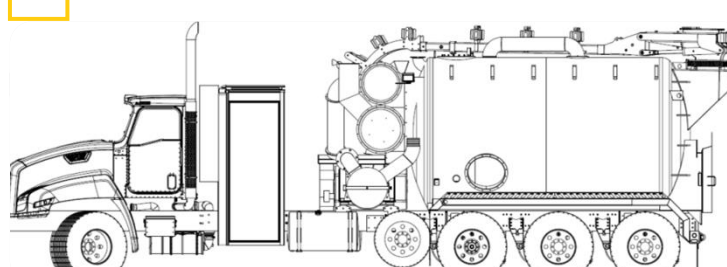
**CHASSIS:** Tridem **BODY:** CV200  
**WATER CAPACITY:** 2200 GAL. **DEBRIS CAPACITY:** 13.5 YRD

2



**CHASSIS:** Tandem w/ Pusher **BODY:** CV100T  
**WATER CAPACITY:** 1600 GAL. **DEBRIS CAPACITY:** 13.5 YRD

4



**CHASSIS:** Tridem w/ Pusher **BODY:** CV300  
**WATER CAPACITY:** 2200 GAL. **DEBRIS CAPACITY:** 13.5 YRD

CV SERIES™ line of hydrovacs.  
 Simply the best dedicated  
 hydroexcavator in the industry.

Every aspect of the hydrovac  
 process was analyzed to ensure  
 your CV pulls the most dirt in the  
 least amount of time with the safest  
 and most efficient operation.

The patent protected machines offer  
 the power, safety and performance  
 both you and your customers  
 demand.

## TECHNICAL SPECIFICATONS AND EQUIPMENT

	2 Axle truck (CV 100)	2 Axle truck + pusher (CV 100T)	3 Axle truck (CV 200)
Debris/Fresh water	13.5yrd/1600gal	13.5yrd/1600gal	13.5yrd/2200gal
Total Payload	43'280	43'280	46'600
Dimensions LxWxH	38'x8' 6"x 13' 4"	38'x8' 6"x13' 4"	39' 2"x8' 6"x 13' 3"

### Premier control systems

- > Anytime hydraulics powered by hotshift PTO
- > Effcient gearing on transerfcase allows engine to run in peak power range
- > Transerfcase interlock and shift aid, ensure that gear abuse by the operator is eliminated
- > Passive temperature monitoring of critical systems
- > Back up controls for all wireless functions
- > Hard wired and electromechanical control facilitate field repairs/diagnosis

### Radio remote control

- > Suction boom control
- > Water pump speed/pressure control
- > Vacuum breaker control
- > Dump door/lock control
- > Unloading pusher control
- > Engine speed control
- > E-stop

### High pressure system

- > Cat pumps 3560 high pressure water pump with a system capacity of 20 gpm and 3000 psi (factory settings)
- > Dig hose reel with 75' of .5" hose
- > 700k BTU certified boiler
- > Air power retract hose reel
- > Wash bars inside tank and flush out nozzle in the cyclone
- > Variable speed hydraulic drive

### Water system options

- > Secondary digging hose reel (with tools)
- > Secondary steam hose reel (with tools)
- > 100' of .5" hose
- > Delete hot water boiler

### Vacuum system

- > Robuschi RBDV 145 vacuum blower with a system capacity of 6400 cfm and 28" hg max vacuum
- > Direct drive via split shaft PTO (transerfcase)
- > 6 way, extra heavy duty, hydraulic powered boom
- > 32' of 8" suction hose
- > 20' + dig depth without hose assembly
- > Hydraulic Vacuum breaker
- > 10 micron final filter

### Tank superstructure

- > Tank shell .25" A36 minimum thickness
- > Divided/integrated water and debris volumes
- > Fixed tank design means no tipping for safer unloading
- > Sloped floor design with pusher
- > Heavy duty fenders for storage of tools/extension hose
- > Powder coated inside and out

### General options

- > Hydraulic trash pump
- > Rear steps
- > Rear platforms
- > Towing package
- > 3 levels of heat protection for water system
- > Weight scale system
- > Custom options available